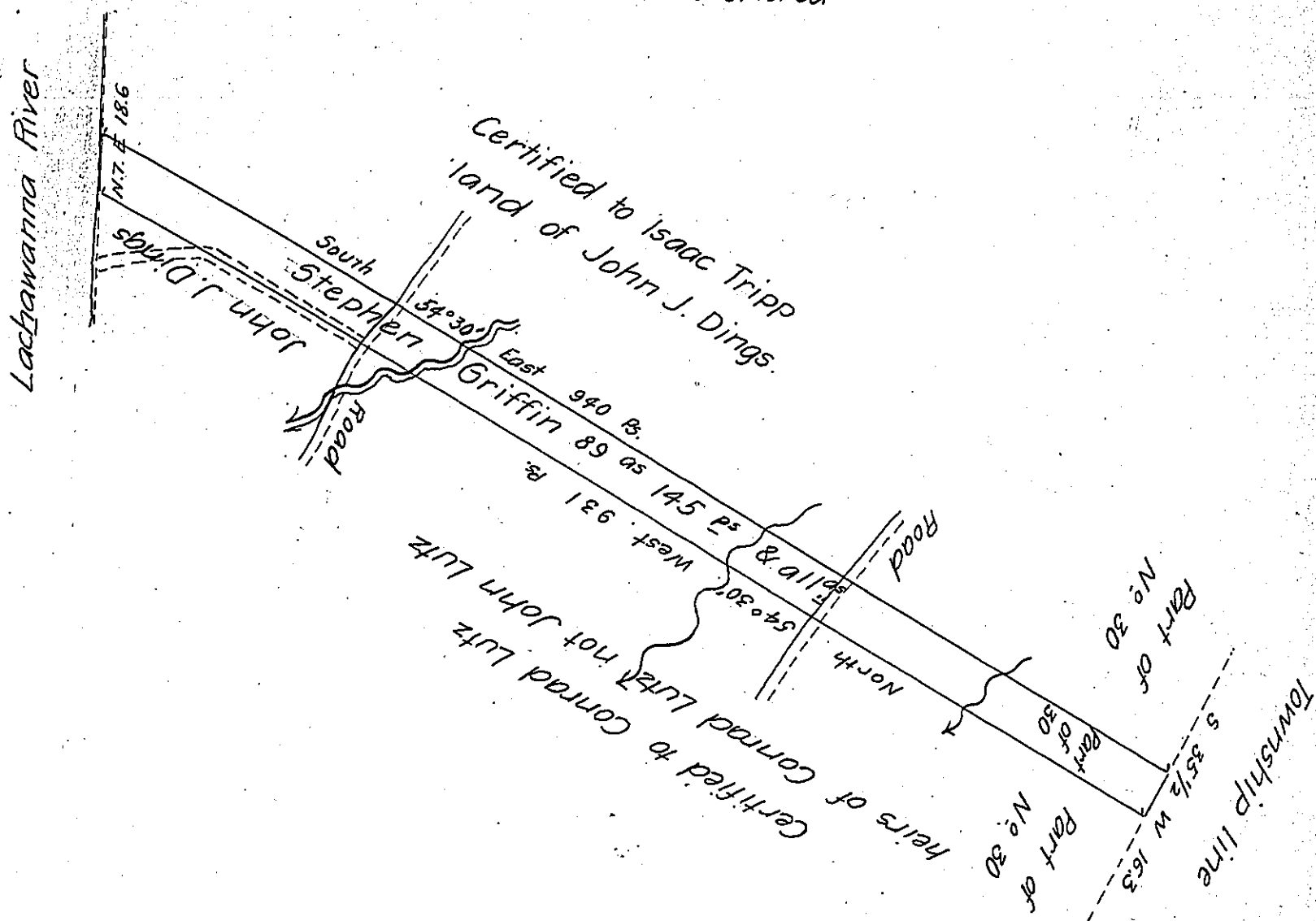


N.B. - The parallel lines are shortened.



Draught of a tract of land situate in Providence one of the
 seventeen Townships in Luzerne County, being part of lot number
 thirty in that Township, and containing eighty nine acres and one
 hundred and forty five perches, with the usual allowance &c. Surveyed
 the above described tract of land for Stephen Griffin the 19th day
 of May 1819. By virtue of his warrant dated the 20th day of March 1819

John Bennet D.S.

To Jacob Spangler Esq^r

Surv^r Gen^l

N.B. The above described tract of land was granted to
 John J. Dings by a warrant dated the 6th day of March 1819. John
 J. Dings and family reside upon the above described tract of land.

John Bennet D.S.

IN TESTIMONY that the above is a copy of the original remaining on file in
 the Department of Internal Affairs of Pennsylvania, made
 conformably to an Act of Assembly approved the 16th day of
 February, 1833, I have hereunto set my Hand and caused
 the Seal of said Department to be affixed at Harrisburg,
 this twenty fourth day of February 1905

Isaac B. Brown
 Secretary of Internal Affairs.